



Who we are.....



fostering a wildlife legacy

Our History...

- In 1987, Ann and Alexander 'Sandy' Cross donate 2800 acres of their land to the province for conservation and education, at the time the largest donation of its kind in Canadian history. The area was managed by the Nature Conservancy of Canada.
- In 1996 an additional 2800 acres was donated, bringing the area to 4800 acres
- Today the area is managed by the Ann & Sandy Cross Conservation Area, a private charitable organization, with a 99-year lease from the province of Alberta.



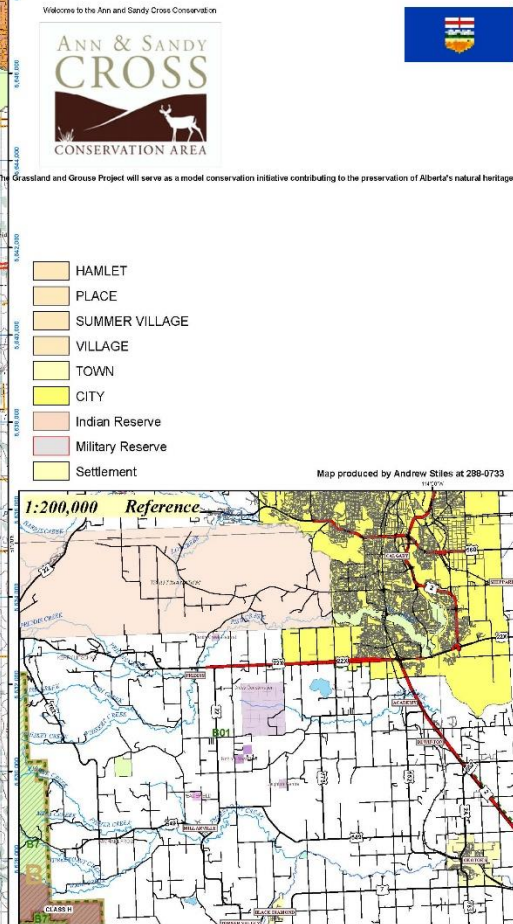
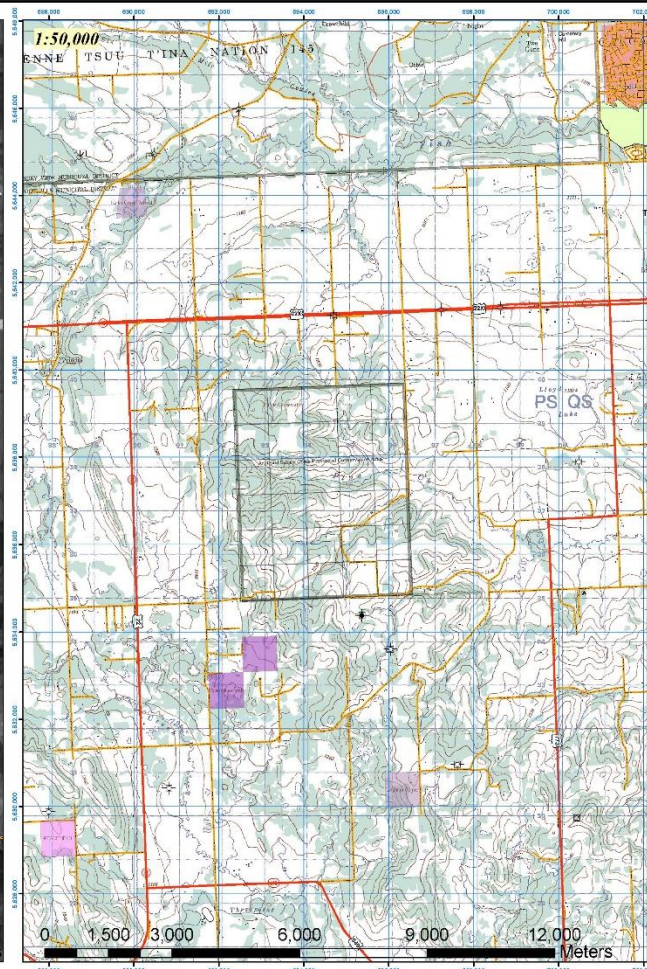
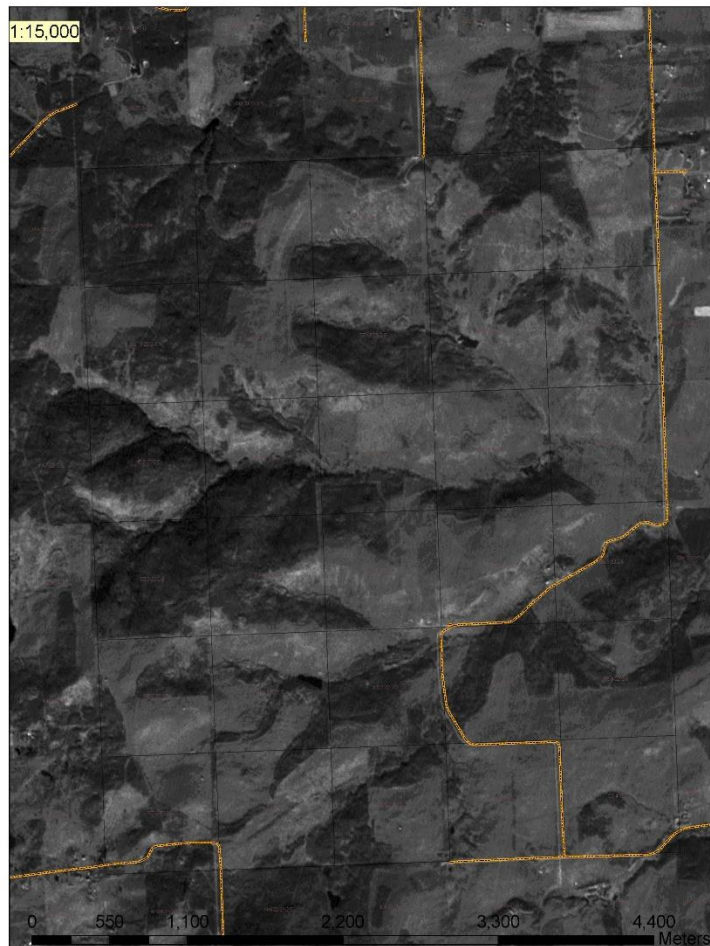
About Us...

MISSION

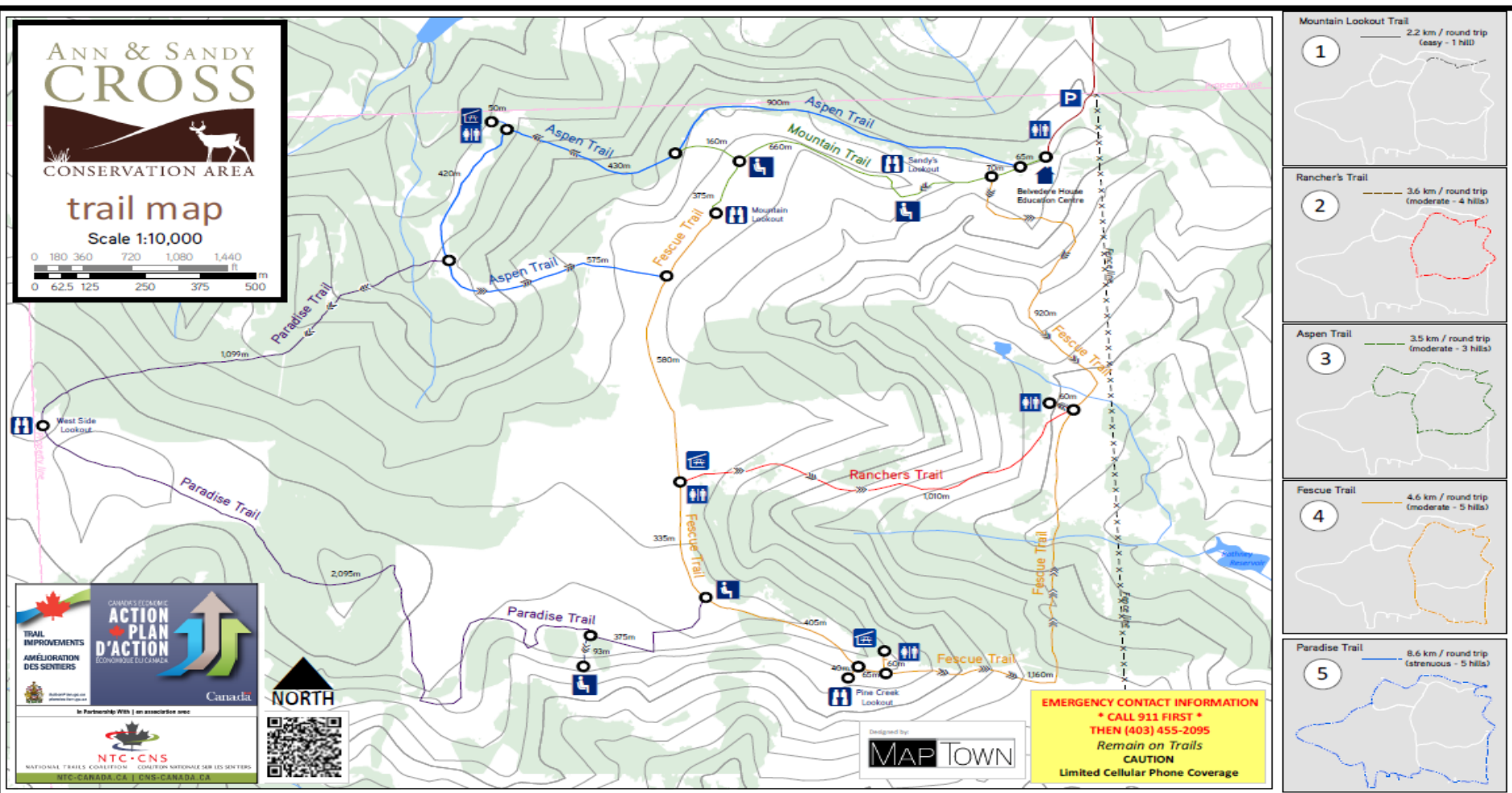
To foster conservation of habitat for native species of wildlife. We achieve this Mission by providing space for wildlife, provide opportunities for individuals and families to enjoy the outdoors and by offering conservation education programs and supporting community conservation initiatives.



Where we are.....



Our existing trail system.....



About Us...

- **ASCCA is located 30 kilometres southwest of downtown Calgary;**
- **Our 4800 acres nature preserve was donated by Ann and Sandy Cross and it features 20 kilometres of scenic trails;**
- **Over 120,000 youth and adults have participated in our hands-on, conservation based learning opportunities;**
- **We are a proud recipient of the Alberta Emerald Award for Excellence in Conservation Education;**
- **ASCCA is a charitable, not-for-profit organization that opened to the public in 1993.**



Environmental Leadership.....

- Working with the Miistakis Institute, Cows and Fish and other partners, we have reintroduced beavers to the ASCCA ;
- We have a 12-year program with the Junior Forest Wardens to reforest the ASCCA;
- A Memorandum of Understanding is in place with Mount Royal University, providing a venue for academics and students to undertake meaningful hands-on research;
- We are actively protecting restoring the ASCCA's magnificent flora and fauna.



About Us...

VISION

- A national and international model in sustainability;
- A leader in landscape-level approaches to management of protected areas;
- A key contributor to collaborative approaches in conservation.



Conservation Discovery Education Programs

- Engaging 5,000 children annually (pre-pandemic);
- Hands on nature and conservation programming;
- Promoting an awareness and appreciation of conservation issues;
- Teaching tomorrow's decision-makers about how they might help find solutions to the environmental issues we now face.



‘Caught on Camera’ showcasing the diverse wildlife of the ASCCA with video and images taken by motion sensing cameras

